

# 050-695

## Novell

### *Novell eDirectory Design and Implementation :eDirectory 8.8*

*OfficialCerts.com is a reputable IT certification examination guide, study guides and audio exam provider. We ensure that you pass your 050-695 exam in first attempt and also get high scores to acquire Novell certification.*

*If you use OfficialCerts 050-695 Certification questions and answers, you will experience actual 050-695 exam questions/answers. We know exactly what is needed and have all the exam preparation material required to pass the exam. Our Novell exam prep covers over 95% of the questions and answers that may be appeared in your 050-695 exam. Every point from pass4sure 050-695 PDF, 050-695 review will help you take Novell 050-695 exam much easier and become Novell certified.*

*Here's what you can expect from the OfficialCerts Novell 050-695 course:*

- \* Up-to-Date Novell 050-695 questions as experienced in the real exam.*
- \* 100% correct Novell 050-695 answers you simply can't find in other 050-695 courses.*
- \* All of our tests are easy to download. Your file will be saved as a 050-695 PDF.*
- \* Novell 050-695 brain dump free content featuring the real 050-695 test questions.*

*Novell 050-695 certification exam is of core importance both in your Professional life and Novell certification path. With Novell certification you can get a good job easily in the market and get on your path for success. Professionals who passed Novell 050-695 exam training are an absolute favorite in the industry. You will pass Novell 050-695 certification test and career opportunities will be open for you.*

<http://www.studentidisinistra.org/?testid=exams.asp?examcode=050-695>



**QUESTION 1:**

Which protocol allows users on TCP/IP networks to dynamically discover available network services?

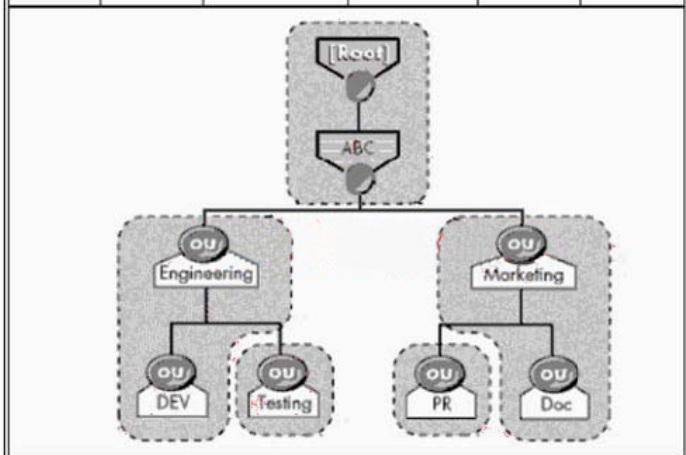
- A. NTP
- B. DHCP
- C. SLP
- D. RIP
- E. SAP

Answer: C

**QUESTION 2:**

Shown in the exhibit is a Partition and Replica table along with a partitioned eDirectory tree. Which servers automatically receive a subordinate reference of the Testing partition?

| Server      | [Root] | Engineering | Marketing | Testing | PR     |
|-------------|--------|-------------|-----------|---------|--------|
| CertKiller1 | Master | Master      | Master    | Master  | Master |
| CertKiller2 | R/W    | R/W         |           |         |        |
| CertKiller3 |        |             | R/W       |         |        |
| CertKiller4 |        | R/W         |           |         |        |
| CertKiller5 | R/W    |             | R/W       |         |        |
| CertKiller6 | R/W    | R/W         | R/W       |         |        |



- A. Certkiller 3, Certkiller 5, and Certkiller 6
- B. Certkiller 2, Certkiller 3, Certkiller 4, Certkiller 5, and Certkiller 6
- C. Certkiller 2, Certkiller 5, and Certkiller 6
- D. Certkiller 2, Certkiller 4, Certkiller 5, and Certkiller 6
- E. Certkiller 2, Certkiller 4, and Certkiller 6

Answer: E

---

**QUESTION 3:**

What is a good recommendation to follow when designing partitions for upper layers in the tree?

- A. Place all servers, including servers at different locations, in the same partition.
- B. Always partition upper layers locally.
- C. Partition the Directory by function regardless of location.
- D. Use organizational divisions, departments, workgroups, and their associated resources, to define upper-layer partitions.
- E. Design your partition structure with fewer partitions at the top of the tree and more partitions as you move toward the bottom.

Answer: E

---

**QUESTION 4:**

Which are characteristics of the Service Agent (SA) when referring to the Service Location Protocol? (Choose 2.)

- A. SAs request service locations from the User Agent (UA).
- B. Directory Agents request service locations from SAs.
- C. SAs maintain a record of all services advertised by the Directory Agent (DA).
- D. Network servers load SAs by default.
- E. SAs are primarily intended for smaller networks.

Answer: D,E

---

**QUESTION 5:**

What is a good recommendation to follow when designing partitions for lower layers in the tree?

- A. Partition the Directory with more partitions at the top and fewer partitions at lower-levels.
- B. Place all servers, including servers at different locations, in the same partition.
- C. Create a partition for each container.
- D. Use organizational divisions and workgroups to define lower-level partitions.
- E. Partition the Directory by function regardless of location.

Answer: D

---

## OfficialCerts.com Certification Exam Full Version Features;

- Verified answers researched by industry experts.
- Exams **updated** on regular basis.
- Questions, Answers are downloadable in **PDF** format.
- **No authorization** code required to open exam.
- **Portable** anywhere.
- 100% success **Guarantee**.
- **Fast**, helpful support 24x7.

View list of All exams we offer;

<http://www.officialcerts.com/allexams.asp>

To contact our Support;

<http://www.officialcerts.com/support.asp>

View FAQs

<http://www.officialcerts.com/faq.asp>

Download All Exams Samples

<http://www.officialcerts.com/samples.asp>

To purchase Full Version and updated exam;

<http://www.officialcerts.com/allexams.asp>



Shop now using **PayPal**



|            |                    |                  |         |                  |              |           |
|------------|--------------------|------------------|---------|------------------|--------------|-----------|
| 3COM       | CompTIA            | Filemaker        | IBM     | LPI              | OMG          | Sun       |
| ADOBE      | ComputerAssociates | Fortinet         | IISFA   | McAfee           | Oracle       | Sybase    |
| APC        | CWNP               | Foundry          | Intel   | McData           | PMI          | Symantec  |
| Apple      | DELL               | Fujitsu          | ISACA   | Microsoft        | Polycom      | TeraData  |
| BEA        | ECCouncil          | GuidanceSoftware | ISC2    | Mile2            | RedHat       | TIA       |
| BICSI      | EMC                | HDI              | ISEB    | NetworkAppliance | Sair         | Tibco     |
| CheckPoint | Enterasys          | Hitachi          | ISM     | Network-General  | SASInstitute | TruSecure |
| Cisco      | ExamExpress        | HP               | Juniper | Nokia            | SCP          | Veritas   |
| Citrix     | Exin               | Huawei           | Legato  | Nortel           | See-Beyond   | Vmware    |
| CIW        | ExtremeNetworks    | Hyperion         | Lotus   | Novell           | Google       |           |

*You have made the*  
**Right Choice**

You are becoming member of most comprehensive, accurate, highest quality and lowest cost certification resource in the world.

