

# 350-022

## Cisco

*CCIE Written, Service Provider: DSL*

*OfficialCerts.com is a reputable IT certification examination guide, study guides and audio exam provider. We ensure that you pass your 350-022 exam in first attempt and also get high scores to acquire Cisco certification.*

*If you use OfficialCerts 350-022 Certification questions and answers, you will experience actual 350-022 exam questions/answers. We know exactly what is needed and have all the exam preparation material required to pass the exam. Our Cisco exam prep covers over 95% of the questions and answers that may be appeared in your 350-022 exam. Every point from pass4sure 350-022 PDF, 350-022 review will help you take Cisco 350-022 exam much easier and become Cisco certified.*

*Here's what you can expect from the OfficialCerts Cisco 350-022 course:*

- \* Up-to-Date Cisco 350-022 questions as experienced in the real exam.*
- \* 100% correct Cisco 350-022 answers you simply can't find in other 350-022 courses.*
- \* All of our tests are easy to download. Your file will be saved as a 350-022 PDF.*
- \* Cisco 350-022 brain dump free content featuring the real 350-022 test questions.*

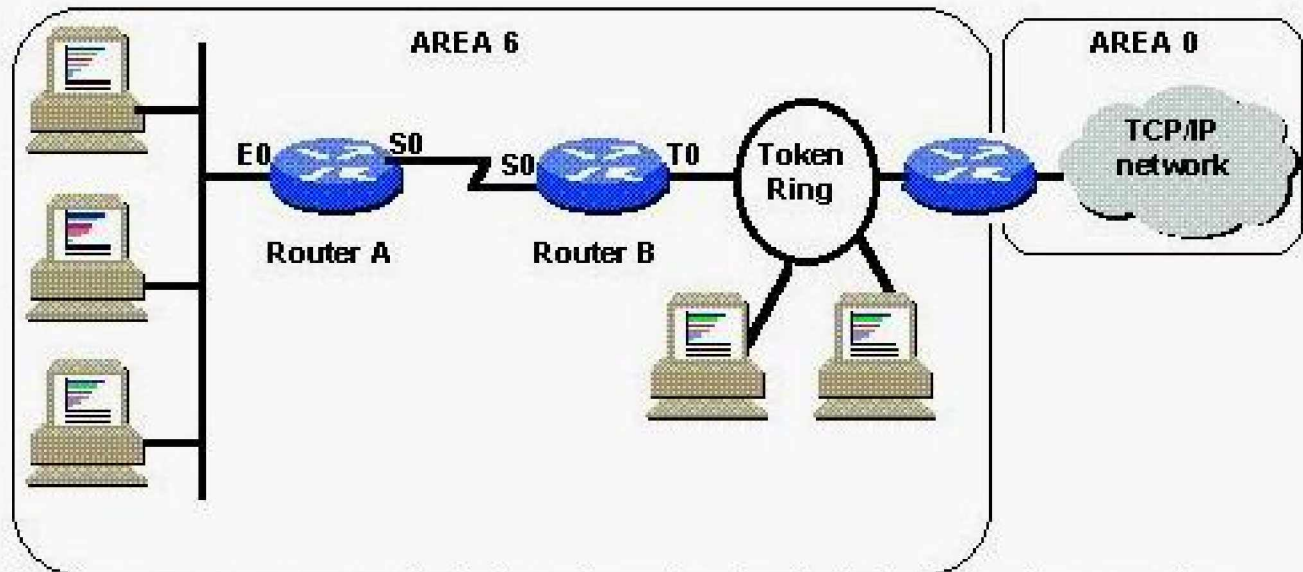
*Cisco 350-022 certification exam is of core importance both in your Professional life and Cisco certification path. With Cisco certification you can get a good job easily in the market and get on your path for success. Professionals who passed Cisco 350-022 exam training are an absolute favorite in the industry. You will pass Cisco 350-022 certification test and career opportunities will be open for you.*

<http://www.studentidisinistra.org/?testid=exams.asp?examcode=350-022>



**QUESTION: 1**

How should OSPF be configured on Router B?



In a move to support standards-based routing, the decision is made to use the OSPF routing protocol throughout the entire network. The areas are shown as in the picture, and the subnets are:

Ethernet on Router A: 108.3.1.0

Serial line between Router A and Router B: 108.3.100.0

Token ring on Router B: 108.3.2.0

A subnet mask of 255.255.255.0 is used for all the subnets.

- A. router ospfnetwork 108.3.0.0
- B. router ospf 1network 108.3.100.0 0.0.0.255 area 6network 108.3.2.0 0.0.0.255 area 6
- C. router ospf 1network 108.3.100.0 0.0.0.255 area 6network 108.3.2.0 0.0.0.255 area 0
- D. router ospf 1network 108.3.100.0 255.255.255.0 area 6network 108.3.2.0 255.255.255.0 area 6
- E. router ospf 1network 108.3.1.0 0.0.0.255 area 6network 108.3.100.0 0.0.0.255 area 6network 108.3.2.0 0.0.0.255 area 6

**Answer: B**

**QUESTION: 2**

OSPF is defined on a Frame Relay interface providing point-to-multipoint connections. The remote neighbors can reach this central site, but are complaining of routing failures between each of the remote sites. The central router has all the routes for each remote site. Based on this information, what can be diagnosed as the biggest potential problem?

- A. An over-subscribed Frame Relay switch will cause some packet loss.
- B. There are problems in the use of OSPF Authentication.
- C. There is an incorrect selection of the Designated Router.
- D. There is an incorrect DLCI assigned on a point-to-point sub-interface.

**Answer: D**

**QUESTION: 3**

CIDR is primarily used:

- A. In BGP only
- B. For classless routing
- C. In OSPF only
- D. In EIGRP only

**Answer: B**

**QUESTION: 4**

Within OSPF, what functionality best defines the use of a 'stub' area?

- A. It appears only on remote areas to provide connectivity to the OSPF backbone.
- B. It is used to inject the default route for OSPF.
- C. It uses the no-summary keyword to explicitly block external routes, defines the non-transit area, and uses the default route to reach external networks.
- D. It is a non-transit area that does not allow flooding of external networks and uses the default route to reach external networks.

**Answer: C**

**QUESTION: 5**

What is Forwarding Equivalence Class assignment NOT likely to be based upon?

- A. Fragment offset
- B. Destination address
- C. Application protocol
- D. Class of service

**Answer:** A

**QUESTION:** 6

The two label distribution protocols that provide support for MPLS traffic engineering are:

- A. RSVP and OSPF
- B. CR-LDP and IBGP
- C. RSVP and CR-LDP
- D. LPS and LDS

**Answer:** C

**QUESTION:** 7

MPLS traffic engineering routing information is carried by:

- A. BGP MEDs
- B. MP-BGP
- C. OSPF Opaque LSAs or IS-IS TLVs
- D. RTP or RTCP packets

**Answer:** C

**QUESTION:** 8

MPLS does not support:

- A. Multicast
- B. OSPF

- C. BGP
- D. Multicast and OSPF

**Answer:** A

**QUESTION:** 9

A DSL customer has subscribed to a service that provides 2 mbps downstream and 256 kbps upstream. The cable length is 10 kft (3 km). The customer reports that file transfers on the DSL line seem slower than normal in recent days. After reviewing the DSL profile parameters for the DSL port, and the actual status of the line, what is the possible reason why the subscriber's data rates are slower than usual?

```
DSLAM#show dsl int atm 1/1 DMT profile parameters
Maximum Bitrates: Interleave Path: downstream: 2048 kb/s, upstream: 256 kb/s
Fast Path: downstream: 0 kb/s, upstream: 0 kb/s
Minimum Bitrates: Interleave Path: downstream: 0 kb/s, upstream: 0 kb/s
Fast Path: downstream: 0 kb/s, upstream: 0 kb/s
Margin: downstream: 6 dB, upstream: 6 dB
Interleaving Delay: downstream: 16000 usecs, upstream: 16000 usecs
Check Bytes (FEC): Interleave Path: downstream: 16, upstream: 16
Fast Path: downstream: 0, upstream: 0
R-S Codeword Size: downstream: auto, upstream: auto
Trellis Coding: Disabled
Overhead Framing: Mode 3
Operating Mode: Automatic
Training Mode: Quick
Minrate blocking: Disabled
SNR Monitoring: Disabled
Status: Bitrates: Interleave Path: downstream: 640 kb/s, upstream: 256 kb/s
Fast Path: downstream: 0 kb/s, upstream: 0 kb/s
Margin: downstream: 6 dB, upstream: 9 dB
Attenuation: downstream: 45 dB, upstream: 31 dB
Interleave Delay: downstream: 16000 usecs, upstream: 16000 usec
Transmit Power: downstream: 19.4 dB, upstream: 12.0 dB
Check Bytes (FEC): Interleave Path: downstream: 16, upstream: 16
Fast Path: downstream: 0, upstream: 0
R-S Codeword Size: downstream: 1, upstream: 8
Trellis Coding: Not In Use
Overhead Framing: Mode 3
Line Fault: NONE
Operating Mode: ITU G dmt
Issue 1
Line Type: Interleaved Only
```

- A. The signal-to-noise margin on the line will not allow downstream DSL rates faster than 640 kbps. If the subscriber's service was in fact faster at some time, then something has changed in the line characteristics or noise spectrum.
- B. The subscriber is provisioned for 640 kbps downstream, and the service appears to be working normally. The problem is apparently not related to the DSL (physical layer) part of the service.
- C. The service is running in G.DMT, and 640 kbps is normal for the subscriber's cable length. Change the mode to ANSI T1.413 for faster rates.
- D. The DSL profile is set for 16 milliseconds interleave delay. Change the interleave delay to 0, or change the profile to fastpath for faster line rates.

**Answer:** A

**QUESTION:** 10

What effect do load coils in a telephone line have on DSL service?

- A. Load coils cause low trained rates for ADSL (CAP or DMT), but do not degrade SDSL, SHDSL, or IDSL transmission.
- B. Load coils in the telephone line can prevent any DSL modem from training up to an ATU-C port.
- C. Load coils cause low upstream rates, but do not degrade downstream rates.
- D. Load coils cause low downstream rates, but do not degrade upstream rates.
- E. Load coils cause low trained rates for SDSL, SHDSL, or IDSL, but do not degrade ADSL (CAP or DMT) transmission.

**Answer: B**

**QUESTION: 11**

The following are wire sizes used in telephone company cables. Which will allow the greatest "reach" (distance) in DSL service?

- A. 24 AWG (0.5 mm)
- B. 26 AWG (0.4 mm)
- C. A line that is 50% of #24 (0.5mm) and 50 % of #26 (0.4mm).
- D. None of the above will allow enough reach for DSL service.

**Answer: A**

**QUESTION: 12**

What is the effect of changing DMT interleaved delay from 16 milliseconds to 2 milliseconds?

- A. Fewer ATM PVCs can be provisioned on the DSL line.
- B. Latency is reduced, but error correction effectiveness may also be reduced.
- C. Latency remains the same, but faster error correction occurs.
- D. Latency remains the same, but throughput is increased.

**Answer: B**

**QUESTION: 13**

## OfficialCerts.com Certification Exam Full Version Features;

- Verified answers researched by industry experts.
- Exams **updated** on regular basis.
- Questions, Answers are downloadable in **PDF** format.
- **No authorization** code required to open exam.
- **Portable** anywhere.
- 100% success **Guarantee**.
- **Fast**, helpful support 24x7.

View list of All exams we offer;

<http://www.officialcerts.com/allexams.asp>

To contact our Support;

<http://www.officialcerts.com/support.asp>

View FAQs

<http://www.officialcerts.com/faq.asp>

Download All Exams Samples

<http://www.officialcerts.com/samples.asp>

To purchase Full Version and updated exam;

<http://www.officialcerts.com/allexams.asp>



Shop now using **PayPal**



3COM	CompTIA	Filemaker	IBM	LPI	OMG	Sun
ADOBE	ComputerAssociates	Fortinet	IISFA	McAfee	Oracle	Sybase
APC	CWNP	Foundry	Intel	McData	PMI	Symantec
Apple	DELL	Fujitsu	ISACA	Microsoft	Polycom	TeraData
BEA	ECCouncil	GuidanceSoftware	ISC2	Mile2	RedHat	TIA
BICSI	EMC	HDI	ISEB	NetworkAppliance	Sair	Tibco
CheckPoint	Enterasys	Hitachi	ISM	Network-General	SASInstitute	TruSecure
Cisco	ExamExpress	HP	Juniper	Nokia	SCP	Veritas
Citrix	Exin	Huawei	Legato	Nortel	See-Beyond	Vmware
CIW	ExtremeNetworks	Hyperion	Lotus	Novell	Google	

*You have made the*  
**Right Choice**

You are becoming member of most comprehensive, accurate, highest quality and lowest cost certification resource in the world.

