

E20-530

EMC

Network Storage - SAN Specialist

OfficialCerts.com is a reputable IT certification examination guide, study guides and audio exam provider. We ensure that you pass your E20-530 exam in first attempt and also get high scores to acquire EMC certification.

If you use OfficialCerts E20-530 Certification questions and answers, you will experience actual E20-530 exam questions/answers. We know exactly what is needed and have all the exam preparation material required to pass the exam. Our EMC exam prep covers over 95% of the questions and answers that may be appeared in your E20-530 exam. Every point from pass4sure E20-530 PDF, E20-530 review will help you take EMC E20-530 exam much easier and become EMC certified.

Here's what you can expect from the OfficialCerts EMC E20-530 course:

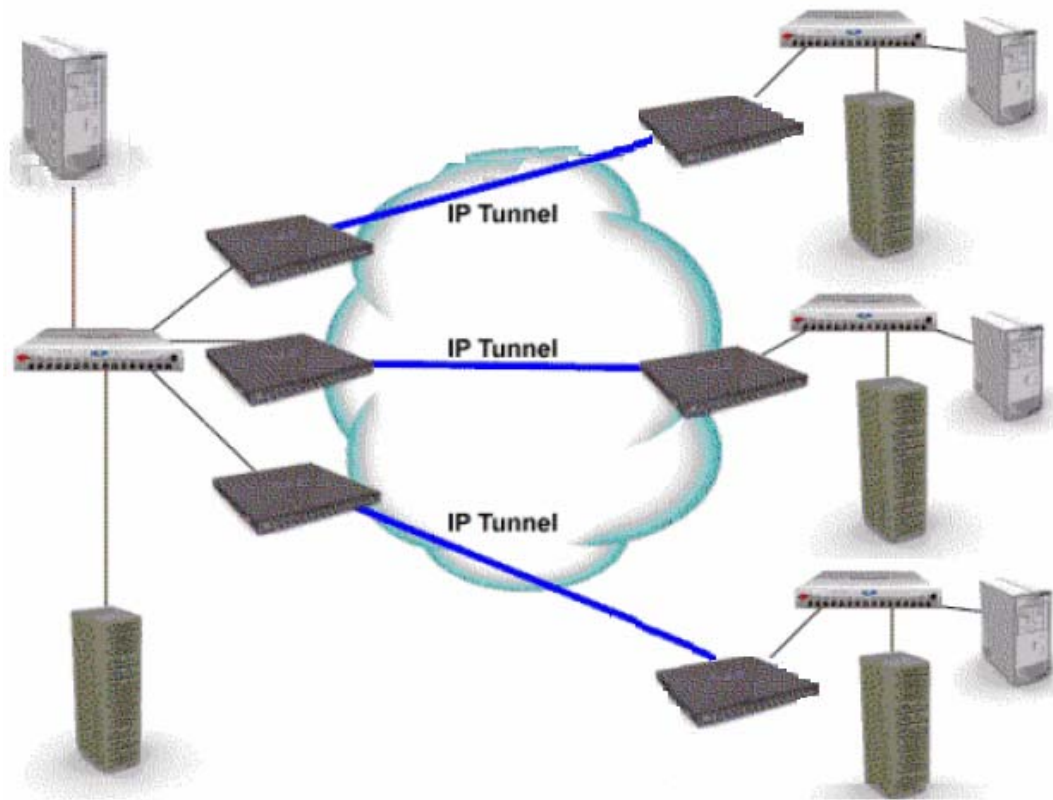
- * Up-to-Date EMC E20-530 questions as experienced in the real exam.*
- * 100% correct EMC E20-530 answers you simply can't find in other E20-530 courses.*
- * All of our tests are easy to download. Your file will be saved as a E20-530 PDF.*
- * EMC E20-530 brain dump free content featuring the real E20-530 test questions.*

EMC E20-530 certification exam is of core importance both in your Professional life and EMC certification path. With EMC certification you can get a good job easily in the market and get on your path for success. Professionals who passed EMC E20-530 exam training are an absolute favorite in the industry. You will pass EMC E20-530 certification test and career opportunities will be open for you.

<http://www.studentidisinistra.org/?testid=exams.asp?examcode=E20-530>



Question: 1
Exhibit



When scaling a FCIP extended network, what must be taken into account prior to merging the SANs?

- A. Process for future firmware upgrades.
- B. Traffic flows could be disrupted should a storage switch go down.
- C. The combined number of devices in the new FCIP extended SAN.
- D. Inter-switch communication, domain and zone management, and VSANs.

Answer: D

Question: 2

What is the difference between the native long-wave Fibre Channel distance that EMC supports vs. what Cisco supports?

- A. EMC: 10 km, Cisco: 35km
- B. EMC: 20 km, Cisco: 15km
- C. EMC: 35 km, Cisco: 10km
- D. EMC: 35 km, Cisco: 15km

Answer: C

Question: 3 DRAG DROP

Which sequence of steps must be performed to complete an online firmware upgrade of a target Switch in an environment with dual fabrics; Power Path, and hosts which are NOT configured to EMC standards?

| Steps in order | Steps to be moved |
|------------------------|--|
| Place first step here | Perform the firmware upgrade |
| Place second step here | Test the HBA and port functionality |
| Place third step here | Restart the EMC Control Center FCC agent |
| Place fourth step here | Deactivate the paths through the target switch |
| Place fifth step here | Reactivate the paths through the target switch |
| Place sixth step here | Shutdown the EMC Control Center FCC agent |
| | Document host HBA port and cable configurations |
| | Reconcile host cabling with the zoning and LUN masking databases |

Answer: Pending. Send your suggestion to feedback@SelfExamEngine.com

Question: 4

How many M-series Products on a single service processor can be supported by Connectrix manager?

- A. 16
- B. 32
- C. 48
- D. 64

Answer: C

Question: 5

Which command is used to determine if the Connectrix Service Processor can communicate to the FCC agent host?

- A. ping
- B. tracert
- C. netstat
- D. ifconfig

Answer: A

Question: 6

How can it be verified that the Control Center Server is available on TCP port 5799?

- A. srvmgr
- B. netstat -a
- C. ping console ltype -m
- D. ping localhost -p 5799

Answer: B

Question: 7

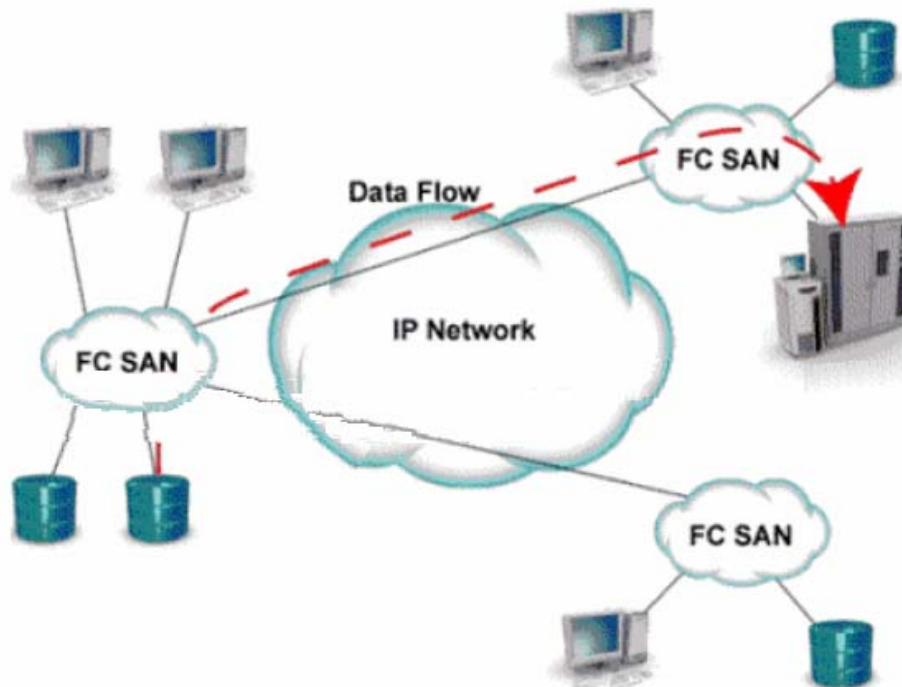
Which two [2] features apply to both the MDS-9120 and the MDS-9140 switches?

- A. All port are non-blocking
- B. Provides "host optimized" ports
- C. Supports SANtegrity Security Suite
- D. Provides "bandwidth optimized" ports

Answer: B, D

Question: 8

Exhibit.



What is represented by the flow in the picture?

- A. ISCI representation of remote DR
- B. IFCP representation of remote DR
- C. IFCP representation of remote backup
- D. ISCSI representation of remote backup

OfficialCerts.com Certification Exam Full Version Features;

- Verified answers researched by industry experts.
- Exams **updated** on regular basis.
- Questions, Answers are downloadable in **PDF** format.
- **No authorization** code required to open exam.
- **Portable** anywhere.
- 100% success **Guarantee**.
- **Fast**, helpful support 24x7.

View list of All exams we offer;

<http://www.officialcerts.com/allexams.asp>

To contact our Support;

<http://www.officialcerts.com/support.asp>

View FAQs

<http://www.officialcerts.com/faq.asp>

Download All Exams Samples

<http://www.officialcerts.com/samples.asp>

To purchase Full Version and updated exam;

<http://www.officialcerts.com/allexams.asp>



Shop now using **PayPal**



| | | | | | | |
|------------|--------------------|------------------|---------|------------------|--------------|-----------|
| 3COM | CompTIA | Filemaker | IBM | LPI | OMG | Sun |
| ADOBE | ComputerAssociates | Fortinet | IISFA | McAfee | Oracle | Sybase |
| APC | CWNP | Foundry | Intel | McData | PMI | Symantec |
| Apple | DELL | Fujitsu | ISACA | Microsoft | Polycom | TeraData |
| BEA | ECCouncil | GuidanceSoftware | ISC2 | Mile2 | RedHat | TIA |
| BICSI | EMC | HDI | ISEB | NetworkAppliance | Sair | Tibco |
| CheckPoint | Enterasys | Hitachi | ISM | Network-General | SASInstitute | TruSecure |
| Cisco | ExamExpress | HP | Juniper | Nokia | SCP | Veritas |
| Citrix | Exin | Huawei | Legato | Nortel | See-Beyond | Vmware |
| CIW | ExtremeNetworks | Hyperion | Lotus | Novell | Google | |

You have made the
Right Choice

You are becoming member of most comprehensive, accurate, highest quality and lowest cost certification resource in the world.

