

# SPS-200

## IBM

### *IBM SPSS MPRO - IBM SPSS Modeler Professional*

Visit: <http://www.pass4sureofficial.com/exams.asp?examcode=SPS-200>

Pass4sureofficial.com is a reputable IT certification examination guide, study guides and audio exam provider, we not only ensure that you pass your SPS-200 exam in first attempt, but also you can get a high score to acquire IBM certification.

If you use pass4sureofficial SPS-200 Certification questions and answers, you will experience actual SPS-200 exam questions/answers. We know exactly what is needed and have all the exam preparation material required to pass the exam. Our IBM exam prep covers over 95% of the questions and answers that may be appeared in your SPS-200 exam. Every point from pass4sure SPS-200 PDF, SPS-200 review will help you take IBM SPS-200 exam much easier and become IBM certified. All the Questions/Answers are taken from real exams.

Here's what you can expect from the Pass4sureOfficial IBM SPS-200 course:

- \* Up-to-Date IBM SPS-200 questions taken from the real exam.
- \* 100% correct IBM SPS-200 answers you simply can't find in other SPS-200 courses.
- \* All of our tests are easy to download. Your file will be saved as a SPS-200 PDF.
- \* IBM SPS-200 brain dump free content featuring the real SPS-200 test questions.

IBM SPS-200 certification exam is of core importance both in your Professional life and IBM certification path. With IBM certification you can get a good job easily in the market and get on your path for success. Professionals who passed IBM SPS-200 exam training are an absolute favorite in the industry. You will pass IBM SPS-200 certification test and career opportunities will be open for you.



<b>Exam Name:</b>	<b>IBMSPSSMPRO: IBM SPSS Modeler Professional</b>		
<b>Exam Type:</b>	<b>IBM</b>	<b>Exam Code:</b>	<b>SPS-200</b>
<b>Certification</b>	<b>IBM Certified Specialist</b>	<b>Total Questions:</b>	<b>73</b>

**Question: 1**

Which key items must be identified before a data mining project is started? (Select all that apply)

- A. A business problem or question
- B. Data quality problem
- C. Available data
- D. Available expertise on the data and business

**Answer: A, B**

**Question: 2**

Given the following Output Table to create a select node which includes vehicles from both groups A and B, click on A and on B (as shown) and select from the menu.

	Policyholder age	Vehicle group	Vehicle age	Average cost of claims	Number of claims
1	17-20	A	0-3	289	8
2	17-20	A	4-7	282	6
3	17-20	A	8-9	133	4
4	17-20	A	10+	160	1
5	17-20	B	0-3	372	10
6	17-20	B	4-7	249	20
7	17-20	B	8-9	380	1
8	17-20	B	10+	11	1
9	17-20	C	0-3	199	9
10	17-20	C	4-7	298	13
11	17-20	C	8-9	179	1
12	17-20	C	10+	Small	0
13	17-20	D	0-3	763	3
14	17-20	D	4-7	860	2
15	17-20	D	8-9	Small	0
16	17-20	D	10+	Small	0
17	21-24	A	0-3	302	10
18	21-24	A	4-7	194	31
19	21-24	A	8-9	135	10
20	21-24	A	10+	166	4

- A. Generate ... Select Node ("Or")
- B. Generate ... Select Node ("And")

**Answer: B**

**Question: 3**

Which nodes are best suited for revealing relationship between categorical (nominal, ordinal) fields? (Select all that apply)

- A. Mean's node
- B. Matrix node

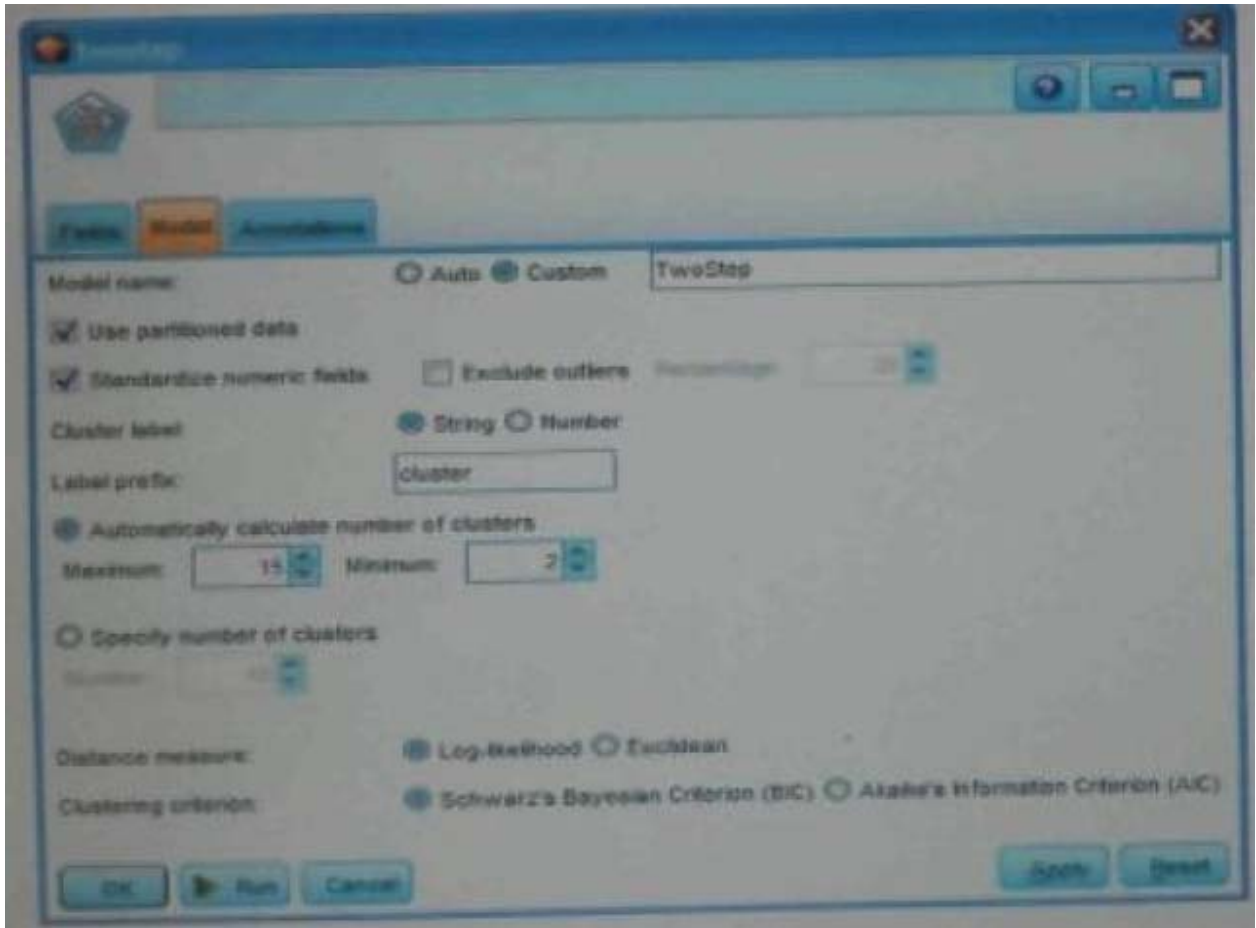
Exam Name:	IBMPSSMPRO: IBM SPSS Modeler Professional		
Exam Type:	IBM	Exam Code:	SPS-200
Certification:	IBM Certified Specialist	Total Questions:	73

- C. Distribution node
- D. Table node

**Answer: A, C**

**Question: 4**

In two step node shown below, what does standardize numeric fields mean?



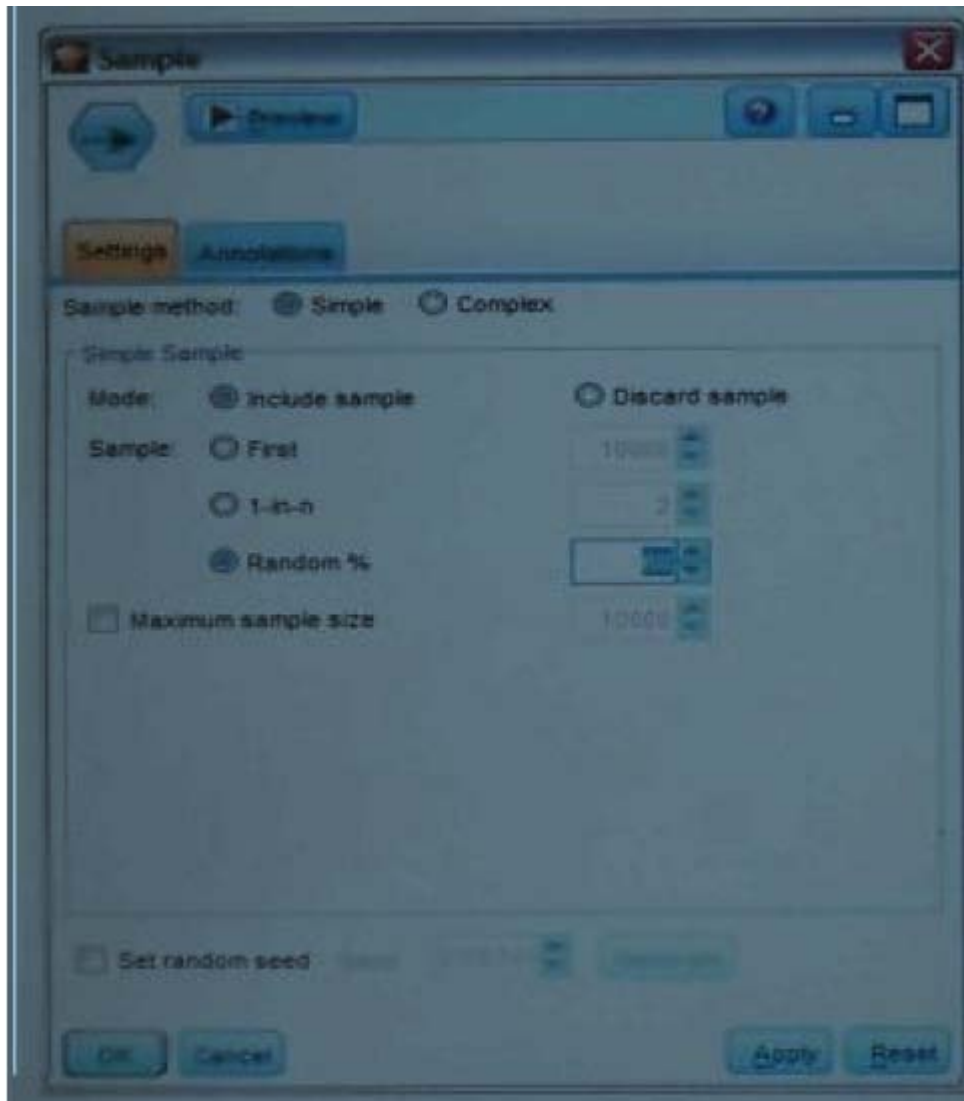
- A. Eliminate outliers to improve results.
- B. Transform the numeric fields to a scale with a mean of zero and variance of one.
- C. Limit the number of created clusters.
- D. Use only the numeric fields scale.

**Answer: B**

**Question: 5**

Which statement is correct regarding the sample node dialogue shown below?

Exam Name:	IBMPSSMPRO: IBM SPSS Modeler Professional		
Exam Type:	IBM	Exam Code:	SPS-200
Certification	IBM Certified Specialist	Total Questions:	73



- A. It will select every 60th record from the data.
- B. It will randomly select exactly 60% of all the record.
- C. It will select approximately 60% of the records. This is, each record will have a 60% probability of being selected.
- D. It will always draw the same 60% of records each time this sample node is run.

**Answer: C**

**Question: 6**

Which statements are true of the Feature Selection node? (Select all that apply)

- A. Input fields can be selected on the basis of importance.
- B. The Target fields can be either categorical or continuous measurement.
- C. The Input fields can only be continuous measurement.
- D. When a target field is not specified then it will create a generalized output.

**Answer: A, B**

## Pass4SureOfficial.com Lifetime Membership Features;

- Pass4SureOfficial Lifetime Membership Package includes over **2500** Exams.
- **All** exams Questions and Answers are included in package.
- **All** Audio Guides are included **free** in package.
- **All** Study Guides are included **free** in package.
- **Lifetime** login access.
- Unlimited download, no account expiry, no hidden charges, just one time \$99 payment.
- **Free updates** for Lifetime.
- **Free Download Access** to All new exams added in future.
- Accurate answers with explanations (If applicable).
- Verified answers researched by industry experts.
- Study Material **updated** on regular basis.
- Questions, Answers and Study Guides are downloadable in **PDF** format.
- Audio Exams are downloadable in **MP3** format.
- **No authorization** code required to open exam.
- **Portable** anywhere.
- 100% success **Guarantee**.
- **Fast**, helpful support 24x7.

View list of All exams (Q&A) downloads

<http://www.pass4sureofficial.com/allexams.asp>

View list of All Study Guides (SG) downloads

<http://www.pass4sureofficial.com/study-guides.asp>

View list of All Audio Exams (AE) downloads

<http://www.pass4sureofficial.com/audio-exams.asp>

Download All Exams Samples

<http://www.pass4sureofficial.com/samples.asp>

To purchase \$99 Lifetime Full Access Membership click here

<http://www.pass4sureofficial.com/purchase.asp>

3COM	CompTIA	Filemaker	IBM	LPI	OMG	Sun
ADOBE	ComputerAssociates	Fortinet	IISFA	McAfee	Oracle	Sybase
APC	CWNP	Foundry	Intel	McData	PMI	Symantec
Apple	DELL	Fujitsu	ISACA	Microsoft	Polycom	TeraData
BEA	ECCouncil	GuidanceSoftware	ISC2	Mile2	RedHat	TIA
BICSI	EMC	HDI	ISEB	NetworkAppliance	Sair	Tibco
CheckPoint	Enterasys	Hitachi	ISM	Network-General	SASInstitute	TruSecure
Cisco	ExamExpress	HP	Juniper	Nokia	SCP	Veritas
Citrix	Exin	Huawei	Legato	Nortel	See-Beyond	Vmware
CIW	ExtremeNetworks	Hyperion	Lotus	Novell	SNIA	

