

E20-670

EMC

Networked Storage-CAS Installation/Troubleshooting Specialization

Visit: <http://www.pass4sureofficial.com/exams.asp?examcode=E20-670>

Pass4sureofficial.com is a reputable IT certification examination guide, study guides and audio exam provider, we not only ensure that you pass your E20-670 exam in first attempt, but also you can get a high score to acquire EMC certification.

If you use pass4sureofficial E20-670 Certification questions and answers, you will experience actual E20-670 exam questions/answers. We know exactly what is needed and have all the exam preparation material required to pass the exam. Our EMC exam prep covers over 95% of the questions and answers that may be appeared in your E20-670 exam. Every point from pass4sure E20-670 PDF, E20-670 review will help you take EMC E20-670 exam much easier and become EMC certified. All the Questions/Answers are taken from real exams.

Here's what you can expect from the Pass4sureOfficial EMC E20-670 course:

- * Up-to-Date EMC E20-670 questions taken from the real exam.
- * 100% correct EMC E20-670 answers you simply can't find in other E20-670 courses.
- * All of our tests are easy to download. Your file will be saved as a E20-670 PDF.
- * EMC E20-670 brain dump free content featuring the real E20-670 test questions.

EMC E20-670 certification exam is of core importance both in your Professional life and EMC certification path. With EMC certification you can get a good job easily in the market and get on your path for success. Professionals who passed EMC E20-670 exam training are an absolute favorite in the industry. You will pass EMC E20-670 certification test and career opportunities will be open for you.



Question: 1

What is default data protection scheme?

- A. Meta
- B. Parity
- C. Mirror
- D. Stripe

Answer: C

Question: 2

What is the approximate storage space increase by using CPP over CPM?

- A. 5% - 10%
- B. 10% - 15%
- C. 16% - 20%
- D. 20% - 25%

Answer: C

Question: 3

Centera cluster is not able to send emails to EMC support. How would the CE test email home?

- A. Centera CLI command 'notify'
- B. Secure shell command 'call home'
- C. Centera CLI command 'test emailhome'
- D. From Centera Viewer pull down menu, click tools, click service, click emailtest

Answer: A

Question: 4

What is the purpose of the Kickstart process?

- A. Builds routing tables in all nodes
- B. Initialize Cube switches to default setup
- C. Assigns Cube and Node identity (cXXXnYY)
- D. Initialize communication between host servers and Cube switches

Answer: C

Question: 5

How many CUAs can point to the same Centera?

- A. 1
- B. 2
- C. 6
- D. Unlimited

Answer: B

Question: 6

During profile creation, which file type is stored on the local host?

- A. .gif
- B. .pea

- C. .prf
- D. .txt

Answer: B

Question: 7

Orphans in a CFA environment are files deleted from which platform?

- A. Centera but NOT the Celerra
- B. Celerra but NOT the Centera
- C. Celerra but NOT from the CFA
- D. CFA but NOT from the Centera

Answer: B

Question: 8

Which additional pools are created in CentraStar 3.1?

- A. Cluster, Default
- B. Application, Cluster
- C. ConsoleAdmin, EMCService
- D. ConsoleArchive, AuditArchive

Answer: D

Question: 9

Which CLI commands are required to configure OnAlert?

- A. Set Cluster Service, Set Owner, Set SMTP
- B. Set SMTP, Set Cluster Notification, Set Owner
- C. Set Cluster Notification, Set Service Cluster, Set Owner
- D. Set Owner, Set Cluster Service, Set Cluster Notification

Answer: D

Question: 10

A 2GB image is stored using cpp on a 16 node Gen4 Centera. How many nodes will contain a segment of that image?

- A. 4
- B. 6
- C. 8
- D. 16

Answer: B

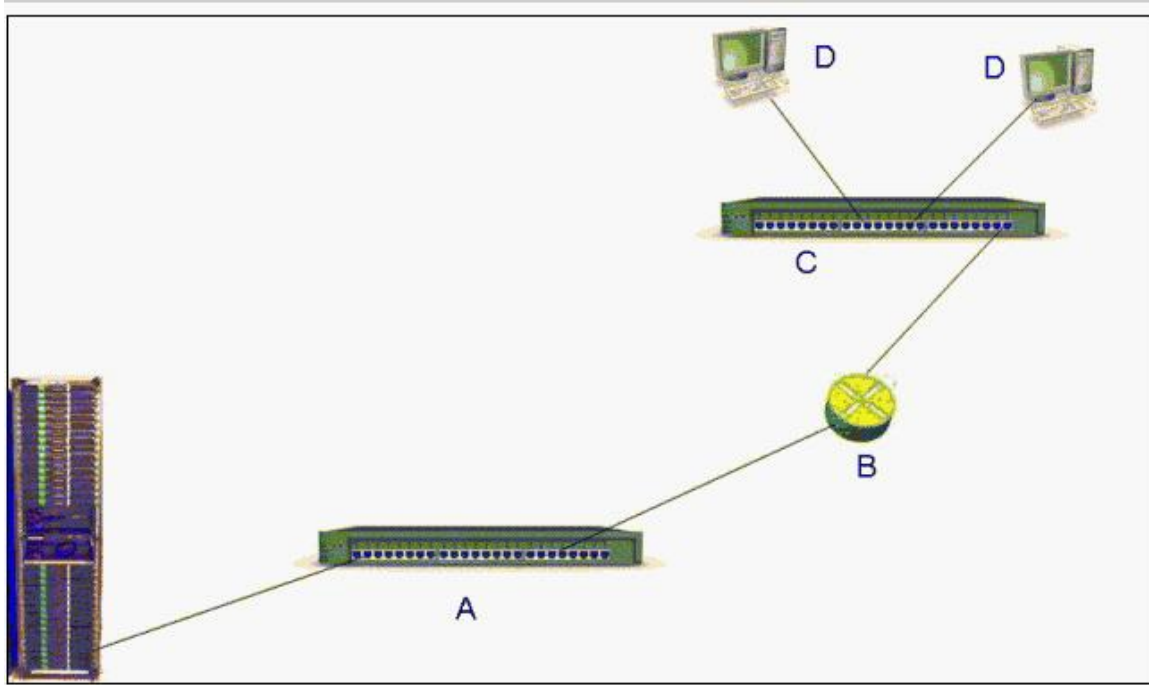
Question: 11

What are the mount points on the CUA?

- A. /sfs_nfs and /sfs_cifs
- B. /cua_nfs and /cua_cifs
- C. /access_nfs and /access_cifs
- D. /gateway_nfs and /gateway_cifs

Answer: D

Question: 12
Exhibit



What are the components of a basic network?

- A. A=Hub B=Switch C=Hub D=Hosts
- B. A=Bridge B=NAT C=Switch D=Hosts
- C. A=Switch B=Router C=Switch D=Hosts
- D. A=Router B=Switch C=Router D=Hosts

Answer: C

Question: 13

In CentraStar 3.0, which format does ConnectEMC use to send the health report, alerts and notifications to the customer?

- A. Encrypted XML
- B. Encrypted HTML
- C. Unencrypted XML
- D. Unencrypted HTML

Answer: D

Question: 14

A CE is at a customer site. How should they connect their laptop to the CUA installed on a Gen4 node?

- A. Crossover cable into eth0 using 10.255.0.1
- B. Crossover cable into eth1 using 10.255.0.1
- C. Crossover cable into eth2 using 10.255.0.1

Pass4SureOfficial.com Lifetime Membership Features;

- Pass4SureOfficial Lifetime Membership Package includes over **2500** Exams.
- **All** exams Questions and Answers are included in package.
- **All** Audio Guides are included **free** in package.
- **All** Study Guides are included **free** in package.
- **Lifetime** login access.
- Unlimited download, no account expiry, no hidden charges, just one time \$99 payment.
- **Free updates** for Lifetime.
- **Free Download Access** to All new exams added in future.
- Accurate answers with explanations (If applicable).
- Verified answers researched by industry experts.
- Study Material **updated** on regular basis.
- Questions, Answers and Study Guides are downloadable in **PDF** format.
- Audio Exams are downloadable in **MP3** format.
- **No authorization** code required to open exam.
- **Portable** anywhere.
- 100% success **Guarantee**.
- **Fast**, helpful support 24x7.

View list of All exams (Q&A) downloads

<http://www.pass4sureofficial.com/allexams.asp>

View list of All Study Guides (SG) downloads

<http://www.pass4sureofficial.com/study-guides.asp>

View list of All Audio Exams (AE) downloads

<http://www.pass4sureofficial.com/audio-exams.asp>

Download All Exams Samples

<http://www.pass4sureofficial.com/samples.asp>

To purchase \$99 Lifetime Full Access Membership click here

<http://www.pass4sureofficial.com/purchase.asp>

3COM	CompTIA	Filemaker	IBM	LPI	OMG	Sun
ADOBE	ComputerAssociates	Fortinet	IISFA	McAfee	Oracle	Sybase
APC	CWNP	Foundry	Intel	McData	PMI	Symantec
Apple	DELL	Fujitsu	ISACA	Microsoft	Polycom	TeraData
BEA	ECCouncil	GuidanceSoftware	ISC2	Mile2	RedHat	TIA
BICSI	EMC	HDI	ISEB	NetworkAppliance	Sair	Tibco
CheckPoint	Enterasys	Hitachi	ISM	Network-General	SASInstitute	TruSecure
Cisco	ExamExpress	HP	Juniper	Nokia	SCP	Veritas
Citrix	Exin	Huawei	Legato	Nortel	See-Beyond	Vmware
CIW	ExtremeNetworks	Hyperion	Lotus	Novell	SNIA	

