

050-895

Novell

Novell eDirectory Design and Implementation : eDirectory 8.8

Visit: <http://www.pass4sureofficial.com/exams.asp?examcode=050-895>

Pass4sureofficial.com is a reputable IT certification examination guide, study guides and audio exam provider, we not only ensure that you pass your 050-895 exam in first attempt, but also you can get a high score to acquire Novell certification.

If you use pass4sureofficial 050-895 Certification questions and answers, you will experience actual 050-895 exam questions/answers. We know exactly what is needed and have all the exam preparation material required to pass the exam. Our Novell exam prep covers over 95% of the questions and answers that may be appeared in your 050-895 exam. Every point from pass4sure 050-895 PDF, 050-895 review will help you take Novell 050-895 exam much easier and become Novell certified. All the Questions/Answers are taken from real exams.

Here's what you can expect from the Pass4sureOfficial Novell 050-895 course:

- * Up-to-Date Novell 050-895 questions taken from the real exam.*
- * 100% correct Novell 050-895 answers you simply can't find in other 050-895 courses.*
- * All of our tests are easy to download. Your file will be saved as a 050-895 PDF.*
- * Novell 050-895 brain dump free content featuring the real 050-895 test questions.*

Novell 050-895 certification exam is of core importance both in your Professional life and Novell certification path. With Novell certification you can get a good job easily in the market and get on your path for success. Professionals who passed Novell 050-895 exam training are an absolute favorite in the industry. You will pass Novell 050-895 certification test and career opportunities will be open for you.



Question: 1

Which replica type contains only the partition root object?

- A - Master
- B - Read-only
- C - Read/Write
- D - Filtered replica
- E - Subordinate reference

Answer: E

Question: 2

Which statements are true regarding the placement of eDirectory objects? (Choose 2.)

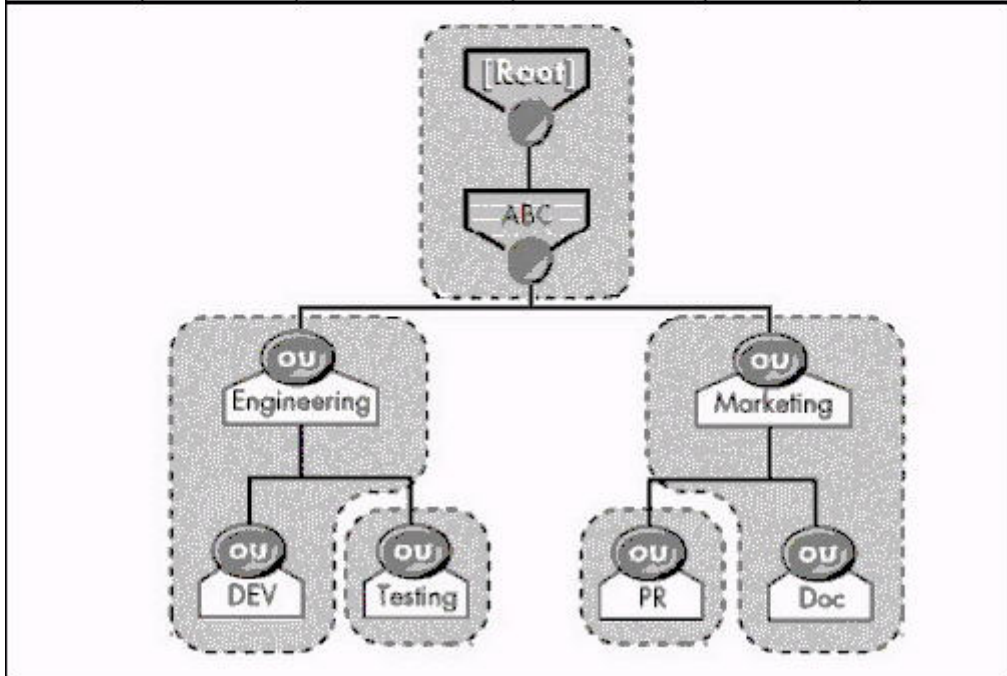
- A - Place application objects in their own container.
- B - Don't place user objects near the top of the tree.
- C - If possible, don't place objects deep within a tree.
- D - If possible, don't place server objects within the same container.
- E - Server objects should be placed near the user objects they are servicing.

Answer: C, E

Question: 3

Exhibit:

Server	[Root]	Engineering	Marketing	Testing	PR
Serv1	Master	Master	Master	Master	Master
Serv2	R/W		R/W		
Serv3		R/W		R/W	
Serv4	R/W				R/W
Serv5	R/W		R/W		
Serv6	R/W	R/W			



How many subordinate references will exist in this tree?

- A - 3
- B - 5
- C - 6
- D - 7
- E - 8
- F - 9
- G - 12

Answer: E

Question: 4

Which of the following is most important to consider when designing the upper layers of an eDirectory tree?

- A - Time synchronization strategy

- B - Number of objects in the tree
- C - Number of servers in the tree
- D - Physical network infrastructure
- E - Number of partitions and replicas

Answer: D

Question: 5

What is the most important design consideration when designing the upper layers of an eDirectory tree?

- A - Partition and replica plan
- B - Time synchronization strategy
- C - Number of objects in the tree
- D - Number of servers in the tree
- E - Physical network infrastructure

Answer: E

Question: 6

What is a part of analyzing user needs when creating an accessibility needs analysis document?

- A - Design a strategy for mobile users.
- B - Specify ZENworks object configurations.
- C - Specify security rights to particular objects.
- D - Gather information related to physical network resource needs.
- E - Create guidelines that determine how eDirectory objects are used to create the user environment.

Answer: D

Question: 7

What tasks are helpful in completing a needs analysis when designing an eDirectory tree? (Choose 2.)

- A - Gather information about network connectivity
- B - Gather information about resources that users access
- C - Gather information to decide on a replica placement strategy
- D - Gather information to estimate the time for each phase of design
- E - Gather information to decide which server should be the time provider

Answer: A, B

Question: 8

Which statement is true about eDirectory partitions?

- A - Partitions can overlap each other.
- B - A container object can reside in 2 partitions.
- C - A partition provides fault tolerance for the file system.
- D - Partitions are logical divisions of eDirectory that enable the database to be divided among several servers.

Answer: D

Question: 9

Pass4SureOfficial.com Lifetime Membership Features;

- Pass4SureOfficial Lifetime Membership Package includes over **2500** Exams.
- **All** exams Questions and Answers are included in package.
- **All** Audio Guides are included **free** in package.
- **All** Study Guides are included **free** in package.
- **Lifetime** login access.
- Unlimited download, no account expiry, no hidden charges, just one time \$99 payment.
- **Free updates** for Lifetime.
- **Free Download Access** to All new exams added in future.
- Accurate answers with explanations (If applicable).
- Verified answers researched by industry experts.
- Study Material **updated** on regular basis.
- Questions, Answers and Study Guides are downloadable in **PDF** format.
- Audio Exams are downloadable in **MP3** format.
- **No authorization** code required to open exam.
- **Portable** anywhere.
- 100% success **Guarantee**.
- **Fast**, helpful support 24x7.

View list of All exams (Q&A) downloads

<http://www.pass4sureofficial.com/allexams.asp>

View list of All Study Guides (SG) downloads

<http://www.pass4sureofficial.com/study-guides.asp>

View list of All Audio Exams (AE) downloads

<http://www.pass4sureofficial.com/audio-exams.asp>

Download All Exams Samples

<http://www.pass4sureofficial.com/samples.asp>

To purchase \$99 Lifetime Full Access Membership click here

<http://www.pass4sureofficial.com/purchase.asp>

3COM	CompTIA	Filemaker	IBM	LPI	OMG	Sun
ADOBE	ComputerAssociates	Fortinet	IISFA	McAfee	Oracle	Sybase
APC	CWNP	Foundry	Intel	McData	PMI	Symantec
Apple	DELL	Fujitsu	ISACA	Microsoft	Polycom	TeraData
BEA	ECCouncil	GuidanceSoftware	ISC2	Mile2	RedHat	TIA
BICSI	EMC	HDI	ISEB	NetworkAppliance	Sair	Tibco
CheckPoint	Enterasys	Hitachi	ISM	Network-General	SASInstitute	TruSecure
Cisco	ExamExpress	HP	Juniper	Nokia	SCP	Veritas
Citrix	Exin	Huawei	Legato	Nortel	See-Beyond	Vmware
CIW	ExtremeNetworks	Hyperion	Lotus	Novell	SNIA	

