

# 70-177

## Microsoft

### TS Microsoft Project Server 2010 Configuring

Visit: <http://www.pass4sureofficial.com/exams.asp?examcode=70-177>

Pass4sureofficial.com is a reputable IT certification examination guide, study guides and audio exam provider, we not only ensure that you pass your 70-177 exam in first attempt, but also you can get a high score to acquire Microsoft certification.

If you use pass4sureofficial 70-177 Certification questions and answers, you will experience actual 70-177 exam questions/answers. We know exactly what is needed and have all the exam preparation material required to pass the exam. Our Microsoft exam prep covers over 95% of the questions and answers that may be appeared in your 70-177 exam. Every point from pass4sure 70-177 PDF, 70-177 review will help you take Microsoft 70-177 exam much easier and become Microsoft certified. All the Questions/Answers are taken from real exams.

Here's what you can expect from the Pass4sureOfficial Microsoft 70-177 course:

- \* Up-to-Date Microsoft 70-177 questions taken from the real exam.
- \* 100% correct Microsoft 70-177 answers you simply can't find in other 70-177 courses.
- \* All of our tests are easy to download. Your file will be saved as a 70-177 PDF.
- \* Microsoft 70-177 brain dump free content featuring the real 70-177 test questions.

Microsoft 70-177 certification exam is of core importance both in your Professional life and Microsoft certification path. With Microsoft certification you can get a good job easily in the market and get on your path for success. Professionals who passed Microsoft 70-177 exam training are an absolute favorite in the industry. You will pass Microsoft 70-177 certification test and career opportunities will be open for you.



<b>Exam Name:</b>	<b>Microsoft Project Server 2010 Configuring</b>		
<b>Exam Type:</b>	<b>Microsoft</b>	<b>Exam Code:</b>	<b>70-177</b>
<b>Certification</b>	<b>Microsoft Certified Technology Specialist (MCTS)</b>	<b>Total Questions:</b>	<b>100</b>

**Question: 1**

You are a project manager in your organization. You have several activities that need to be completed within the next thirty days for your project to reach its deadline on time. How can you view the available resources within the next 30 days to plan on task assignment based on resource availability?

- A. View the available resources through Project Web Access in the Resource Center.
- B. Create a filter in the Project Web Access Resource Center based on resource availability.
- C. Create a filter in the Project Web Access for available resources, groups, and availability.
- D. Create a view in the Project Web Access Resource Center based on availability in the next 30 days.

**Answer: B**

**Explanation:**

In Project Server 2010, the data of an OLAP database can be filtered on the basis of date range combinations. This provides a way to filter the OLAP data efficiently to the information significant to a specific user group. In this case, the OLAP database will contain only the data related to the project and resource that is assigned to their department. In order to complete this task, you will need to create a filter within Project Web Access in the Resource Center. The filter will be designed to show only resource availability within the next 30 days. You can add other filters, such as type of resources for the type of work to complete, if you like. Answer option A is incorrect. If you will not create a filter, then all the resources will be displayed. Answer option D is incorrect. You will not create a view, but a filter to find the results you need. Answer option C is incorrect. The filter is actually created within the Resource Center, not directly on the main page of Project Web Access. What is a Project view? A Project view is used to display task, assignment, or resource information specific to a single project. Detailed information about the project tasks, including enterprise task custom fields is displayed. A user can view, group, filter, and sort information in a Project view based on the information defined in the enterprise task custom fields.

**Question: 2**

Project Server automatically creates four site groups within the project workspace. Which one of the following is NOT a site group that is created automatically?

- A. Readers
- B. Web administrators
- C. Project managers
- D. Stakeholders

**Answer: D**

**Explanation:**

There is no such site group as stakeholders within the project workspace by default. The four groups that are created automatically are project managers, readers, Web administrators, and team members. Answer options C, A, and B are incorrect. Project managers, readers, and Web administrators are the WSS site groups.

**Question: 3**

You are the Microsoft Project Server administrator for your organization and you need to perform a restore to the PSGHT SQL database. You have been using the differential model so you will need to restore from multiple media. What clause will you need to include in your RESTORE DATABASE statement to restore the full database backup that comes before the differential backup to restore your SQL database?

<b>Exam Name:</b>	<b>Microsoft Project Server 2010 Configuring</b>		
<b>Exam Type:</b>	<b>Microsoft</b>	<b>Exam Code:</b>	<b>70-177</b>
<b>Certification</b>	<b>Microsoft Certified Technology Specialist (MCTS)</b>	<b>Total Questions:</b>	<b>100</b>

- A. NORECOVERY
- B. RESTORE
- C. RECOVERY
- D. RESTORE\_DIFF

**Answer: A**

**Explanation:**

When you are recovering a fault using a differential database backup, you will first restore from the full backup the differential is based on and you will use the clause NORECOVERY. This signals to the restore that this is the full backup and additional transaction logs backups are to follow.

Answer option C is incorrect. RECOVERY is used when there are no additional transaction logs to follow.

Answer option D is incorrect. RESTORE\_DIFF is not a valid SQL command.

Answer option B is incorrect. RESTORE is the command that is used with the NORECOVERY or RECOVERY clause.

**Question: 4**

You work as a Project Manager for company.com Inc. You would like to create a filter in order to view all the jobs submitted to the queue within the last seven days. How will you accomplish the task?

- A. This task is possible; you should use the filter "All jobs in the past week" through Project Web Access and the My Queued Jobs page.
- B. This task is not possible. Queue entries are processed and purged from the queue without a history of the action.
- C. This task is possible; the Project Administrator, however, will need to create the view for the project manager and then assign the appropriate permission.
- D. This task is somewhat possible; queued jobs that fail are recorded, but all successful queued jobs are purged from the queue history.

**Answer: A**

**Explanation:**

You can use one of many filters to view the activity and history of jobs that have been queued over the past week through Project Web Access. Answer option B is incorrect. This is possible, as queued jobs do create a history that can be viewed. Answer option D is incorrect. All jobs are queued and a history of the action is recorded. Answer option C is incorrect. The Project Administrator need not create this view for the project manager, as it already exists for the project manager to use.

What are the different types of filters in Project Server 2010?

In Project Server 2010, there are three ways to filter the tasks or resources in a project.

These are as follows:

- 1.Predefined filters: The predefined filters are dispatched with the Project. These are used to filter specific tasks or resources, such as incomplete tasks, or over allocated resources.
- 2.Custom filters: The custom filters are the filters that the users design for their own project needs.
- 3.AutoFilters: The auto filters are used to filter the items in a column quickly. When these filters are turned on, they appear as arrows at the top of each column in a sheet view.

<b>Exam Name:</b>	<b>Microsoft Project Server 2010 Configuring</b>		
<b>Exam Type:</b>	<b>Microsoft</b>	<b>Exam Code:</b>	<b>70-177</b>
<b>Certification</b>	<b>Microsoft Certified Technology Specialist (MCTS)</b>	<b>Total Questions:</b>	<b>100</b>

**Question: 5**

You would like to change the Site Theme of your project workspace. How can you change the Site Theme?

- A. Choose Site Actions, and then select Site Settings.
- B. Choose Site Settings, and then select Customize.
- C. Choose Site Customization, and then select Site Settings.
- D. Choose Site Details, and then select Options.

**Answer: A**

**Explanation:**

Through the workspace you can customize the look and feel of the site by choosing Site Actions, then Site Settings. Answer options C, B, and D are incorrect. These are not the valid methods to change the site settings.

**Question: 6**

You work as a project manager for company.com Inc. You need to develop a solution so that the project manager, executives, and team members can review and discuss the risks of the company's project online. Which of the following is the most appropriate solution for the above task?

- A. Create a new workspace called Risk, and assign permissions to the project manager, executives, and team members.
- B. Use the existing project workspace but create an additional Web Part for the risk of the JHG Project.
- C. Create a new workspace, and assign the appropriate permissions to the project manager, executives, and team members.
- D. Use the existing Risk link in the project workspace that is already created using Microsoft Project Server.

**Answer: D**

**Explanation:**

The executives, project managers, and project team members can use default project workspace to discuss the risks within the project. The default project workspace contains a link called "Risks" that is used to share information regarding project risks to minimize their potential effect on the project and provide ongoing management of identified risks. Answer option A is incorrect. There is no reason to create an additional workspace, as there is a default workspace for all projects with a link called "Risks".

Answer option C is incorrect. The Risk workspace already exists for the project.

Answer option B is incorrect. A Web Part is a link to a resource. It is not needed for this scenario. What is a project workspace?

A Project Workspace is a Microsoft SharePoint Teamsite where the Project team can share documents, issues and risks. A project workspace is created for each project schedule. It is used to leverage WSS technology to enhance communication between project team members. Project managers might use the project workspace to list announcements and events, store a project's documentation, and navigate to the Issues, Risks, and Documents pages for the project.

What are the different methods for creating a project workspace?

The different methods for creating a project workspace are as follows:

1. Automatically: A new workspace is created automatically during a publish operation of an activity plan or proposal in PWA.
2. Semi-Automatically: The project owner is given the option to link the project

<b>Exam Name:</b>	<b>Microsoft Project Server 2010 Configuring</b>		
<b>Exam Type:</b>	<b>Microsoft</b>	<b>Exam Code:</b>	<b>70-177</b>
<b>Certification</b>	<b>Microsoft Certified Technology Specialist (MCTS)</b>	<b>Total Questions:</b>	<b>100</b>

workspace to an existing project workspace during a publish operation of an enterprise project schedule. This is commonly used for master/child project relationships. The project owners can also update the URL of the new project workspace.

3. Manually: The project owner can manually create project workspaces in Project Server. This option allows a project owner to choose whether to create a workspace at the time of a publish operation of an activity plan or proposal in PWA.

**Question: 7**

Gary is the Microsoft Project Server administrator for his company, and is configuring a restore method for his SQL Server. Gary would like to use a command to ensure that the backup operation verifies each page for checksum and torn page and for the entire backup. What command should Gary use?

- A. STOP\_ON\_ERROR
- B. NO\_CHECKSUM
- C. CHECKSUM
- D. CONTINUE\_AFTER\_ERROR

**Answer: C**

**Explanation:**

The CHECKSUM command requests that the backup operation verify each page for checksum and torn page.

Answer option B is incorrect. The NO\_CHECKSUM is the default selection for the restore, and does not verify each page during the restore process.

Answer option D is incorrect. CONTINUE\_AFTER\_ERROR is used in conjunction with the CHECKSUM command. When an error occurs, this command allows the restore to continue but logs the error.

Answer option A is incorrect. STOP\_ON\_ERROR is used in conjunction with the CHECKSUM command. When an error occurs, this command stops the restore process.

**Question: 8**

You work as a Project Manager for company.com Inc. You have been assigned the task to manage a project in order to streamline business processes. You need to prepare a resource estimate required to complete the project in six months or less. The executives want to know how many resources you will need and the skill sets each resource must possess. You have constructed a task list and linked the tasks to create a schedule. What should you do next to prepare the estimate?

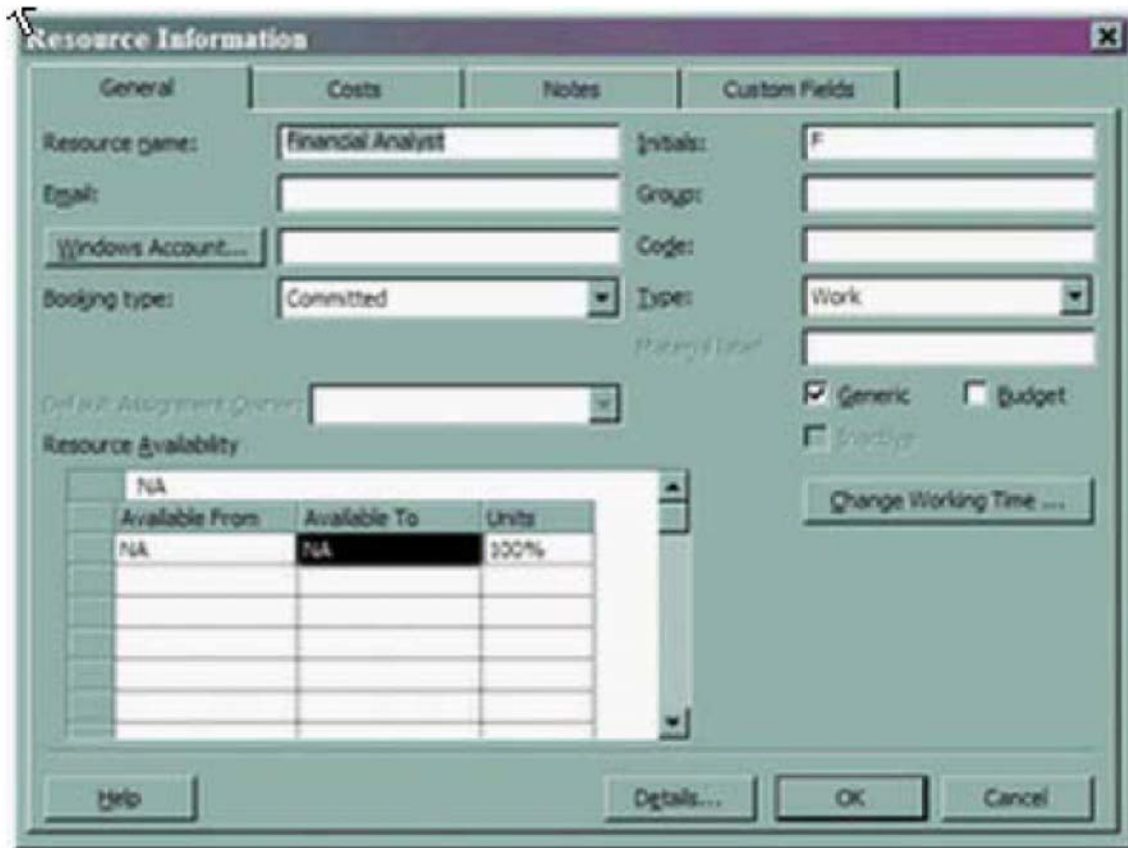
- A. You should open the Assign Resources dialog box. For each task in the project, search for resources by Resource Breakdown Structure codes and assign them to tasks.
- B. You should create generic resources for each set of skills the project requires and assign generic resources to all the tasks.
- C. You should assign specific resources to your project tasks. Then, generate a resource report that specifies the number of resources you need based on their Resource Breakdown Structure codes.
- D. For all the resources you create in your Project file, in the Booking Type drop-down list, choose Proposed.

**Answer: B**

**Explanation:**

You will create generic resources for each set of skills the project requires, as shown below, and then assign generic resources to all the tasks

Exam Name:	Microsoft Project Server 2010 Configuring		
Exam Type:	Microsoft	Exam Code:	70-177
Certification	Microsoft Certified Technology Specialist (MCTS)	Total Questions:	100



Generic resources represent skill sets rather than specific people. By assigning generic resources to tasks, a user can estimate how many resources he needs for each skill set for each time period of a project. Later, generic resources can be replaced with specific resources. Answer option C is incorrect. Assigning specific resources to tasks is not the best way to estimate resources based on skill sets. The skill sets required are not immediately obvious based on a resource name and you must be sure to replace the specific resources you originally assigned with the resources you have been given for your project. Answer option A is incorrect. The Resource Breakdown Structure codes do represent skill sets. However, assigning specific resources means that you must be careful to replace those temporary resources with the ones you have been given for your project. Answer option D is incorrect. Using the Proposed booking type designates resources as tentative assignments when you publish a project to a Project Server. Booking type does not help you determine how many resources you need based on skill sets and does not apply when you use Microsoft Project without Project Server. What are resources?

Resources are required to carry out the project tasks. They can be people, equipment, facilities, funding, or anything else capable of definition (usually other than labour) required for the completion of a project activity. The lack of a resource will therefore be a constraint on the completion of the project activity. There are three types of resources in Project 2007: work, material, and cost. Work resources are those, which are not consumed on the completion of the assigned task. The most common example of work resource is people. Material resources are those, which are consumed as a task progresses. The examples are ink, concrete, wood, etc. Cost resources represent additional costs that are incurred on a task, such as travel expenses, etc.



<b>Exam Name:</b>	<b>Microsoft Project Server 2010 Configuring</b>		
<b>Exam Type:</b>	<b>Microsoft</b>	<b>Exam Code:</b>	<b>70-177</b>
<b>Certification</b>	<b>Microsoft Certified Technology Specialist (MCTS)</b>	<b>Total Questions:</b>	<b>100</b>

**Question: 9**

You work as a Project Manager for company.com Inc. You along with your team need to level project resources. One of your team members is concerned about which project he should work on first. Which of the following attributes of the projects will determine which project your team should work on first when resource leveling is done?

- A. It depends upon the tasks that require the project manager to work on the critical path.
- B. It depends upon the project with the nearest defined milestone.
- C. It depends upon the project manager's determination.
- D. It depends upon the project with the highest project priority set.

**Answer: D**

**Explanation:**

The project priority is set within the Project Information dialog box and is valued from 1 to 1000 with 500 being the default. When a resource is used on multiple projects and resource leveling is used, the project with the highest priority will use the resource's time first.

Answer option C is incorrect. The project manager may have some influence, but the software will schedule the project manager to work based on the project priority.

Answer option A is incorrect. Critical path activities are important, but it is not the determining factor, as the project manager could have critical path activities in all projects.

Answer option B is incorrect. The nearest milestone is not the deciding factor of project priority. How to enter project information?

Take the following steps to enter project information:

1. Select Project > Project Information.

## Pass4SureOfficial.com Lifetime Membership Features;

- Pass4SureOfficial Lifetime Membership Package includes over **2500** Exams.
- **All** exams Questions and Answers are included in package.
- **All** Audio Guides are included **free** in package.
- **All** Study Guides are included **free** in package.
- **Lifetime** login access.
- Unlimited download, no account expiry, no hidden charges, just one time \$99 payment.
- **Free updates** for Lifetime.
- **Free Download Access** to All new exams added in future.
- Accurate answers with explanations (If applicable).
- Verified answers researched by industry experts.
- Study Material **updated** on regular basis.
- Questions, Answers and Study Guides are downloadable in **PDF** format.
- Audio Exams are downloadable in **MP3** format.
- **No authorization** code required to open exam.
- **Portable** anywhere.
- 100% success **Guarantee**.
- **Fast**, helpful support 24x7.

View list of All exams (Q&A) downloads

<http://www.pass4sureofficial.com/allexams.asp>

View list of All Study Guides (SG) downloads

<http://www.pass4sureofficial.com/study-guides.asp>

View list of All Audio Exams (AE) downloads

<http://www.pass4sureofficial.com/audio-exams.asp>

Download All Exams Samples

<http://www.pass4sureofficial.com/samples.asp>

To purchase \$99 Lifetime Full Access Membership click here

<http://www.pass4sureofficial.com/purchase.asp>

3COM	CompTIA	Filemaker	IBM	LPI	OMG	Sun
ADOBE	ComputerAssociates	Fortinet	IISFA	McAfee	Oracle	Sybase
APC	CWNP	Foundry	Intel	McData	PMI	Symantec
Apple	DELL	Fujitsu	ISACA	Microsoft	Polycom	TeraData
BEA	ECCouncil	GuidanceSoftware	ISC2	Mile2	RedHat	TIA
BICSI	EMC	HDI	ISEB	NetworkAppliance	Sair	Tibco
CheckPoint	Enterasys	Hitachi	ISM	Network-General	SASInstitute	TruSecure
Cisco	ExamExpress	HP	Juniper	Nokia	SCP	Veritas
Citrix	Exin	Huawei	Legato	Nortel	See-Beyond	Vmware
CIW	ExtremeNetworks	Hyperion	Lotus	Novell	SNIA	

