

50-701

Novell

Upgrading to Novell Open Enterprise Server for NetWare

Visit: <http://www.pass4sureofficial.com/exams.asp?examcode=50-701>

Pass4sureofficial.com is a reputable IT certification examination guide, study guides and audio exam provider, we not only ensure that you pass your 50-701 exam in first attempt, but also you can get a high score to acquire Novell certification.

If you use pass4sureofficial 50-701 Certification questions and answers, you will experience actual 50-701 exam questions/answers. We know exactly what is needed and have all the exam preparation material required to pass the exam. Our Novell exam prep covers over 95% of the questions and answers that may be appeared in your 50-701 exam. Every point from pass4sure 50-701 PDF, 50-701 review will help you take Novell 50-701 exam much easier and become Novell certified. All the Questions/Answers are taken from real exams.

Here's what you can expect from the Pass4sureOfficial Novell 50-701 course:

- * Up-to-Date Novell 50-701 questions taken from the real exam.*
- * 100% correct Novell 50-701 answers you simply can't find in other 50-701 courses.*
- * All of our tests are easy to download. Your file will be saved as a 50-701 PDF.*
- * Novell 50-701 brain dump free content featuring the real 50-701 test questions.*

Novell 50-701 certification exam is of core importance both in your Professional life and Novell certification path. With Novell certification you can get a good job easily in the market and get on your path for success. Professionals who passed Novell 50-701 exam training are an absolute favorite in the industry. You will pass Novell 50-701 certification test and career opportunities will be open for you.



Exam Name:	Upgrading to Novell Open Enterprise Server for NetWare		
Exam Type:	Novell		
Exam Code:	50-701	Total Questions:	165

Question: 1

After upgrading a NetWare 5.1 server to OES NetWare, you can't mount volume DATA. Given that DATA is an NSS volume, which command will fix the problem?

- A. LOAD NW51.NSS
- B. LOAD ZLSS.NSS
- C. VCU DATA DATA2
- D. VOLMN DATA DATA2
- E. NSS /NW51VOLUMEUPGRADE=ON
- F. NSS /ZLSSVOLUMEUPGRADE=ALL
- G. NSS /NW51VOLUMEUPGRADE=ALL

Answer: F

Question: 2

Distributed File Services uses _____, which allows volumes to be joined together such that they appear as subdirectories in one file system. Answer:

- A. JUNCTIONS

Answer: A

Question: 3

Which products are installed during a Management Server patterned deployment? (Choose 2.)

- A. iSCSI
- B. eGuide
- C. OpenSSH
- D. iFolder
- E. iManager
- F. Virtual Office

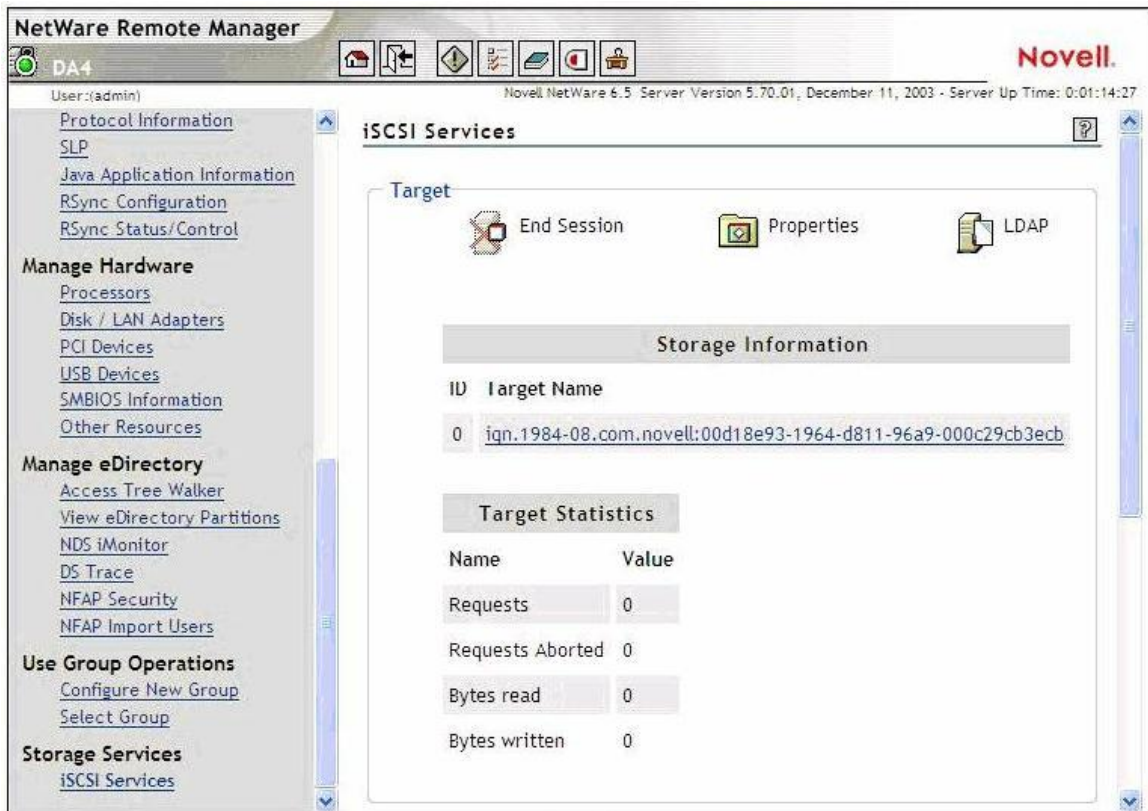
Answer: B, E

Question: 4

Click the Exhibit button to begin.

If you wanted to connect to the iSCSI target displayed in the exhibit, what command would you enter at the iSCSI initiator server console? The IP address of the target is 10.0.0.4.

Exam Name:	Upgrading to Novell Open Enterprise Server for NetWare		
Exam Type:	Novell		
Exam Code:	50-701	Total Questions:	165



- A. ISCSIINIT CONNECT 10.0.0.4 DA4
- B. ISCSIINIT CONNECT TARGET=10.0.0.4
- C. ISCSIINIT 10.0.0.4 iqn.1984-08.com.novell:00d18e93-1964-d811-96a9-000c29cb3ecb
- D. ISCSIINIT CONNECT 10.0.0.4 iqn.1984-08.com.novell:00d18e93-1964-d811-96a9-000c29cb3ecb
- E. ISCSIINIT CONNECT iqn.1984-08.com.novell:00d18e93-1964-d811-96a9-000c29cb3ecb 10.0.0.4
- F. ISCSIINIT CONNECT TARGET=10.0.0.4 NAME=iqn.1984-08.com.novell:00d18e93-1964-d811-96a9-000c29cb3ecb

Answer: D

Question: 5

You have configured a DFS Management Context with the VLDB service running on DA1. In the SHARED directory on DA1's DATA volume, you created a junction to the root of the VOL1 volume on DA2. You then created a CIFS share for the SHARED directory and granted the appropriate rights to your user and group objects to access the directory. When users access the junction from their Windows 2000 Professional workstations without the Novell Client installed, it fails to take them to VOL1 on DA2. Which is the resolution to this problem?

- A. Load VLDB.NLM on DA2.
- B. Add a VLDB replica to DA2.
- C. Enable DFS support for CIFS clients.
- D. Upgrade the workstations to Windows XP Home or Professional.
- E. Run the VERIFY utility to check the integrity of the pool where VOL1 resides on DA2.

Answer: C

Exam Name:	Upgrading to Novell Open Enterprise Server for NetWare		
Exam Type:	Novell		
Exam Code:	50-701	Total Questions:	165

Question: 6

A volume on your OES NetWare server has a security label of Password and Token. A user in your tree has logged in using an eDirectory password and a smart card, granting him a clearance with a Read label of Password and Token and a Write label of Password and Token. What level of access does the user have to the volume?

- A. No access
- B. Read only access
- C. Write only access
- D. Read and Write access

Answer: D

Question: 7

When accessing iManager 2.5, you authenticate as AHammer.BERLIN.EMA. The roles you need are not displayed. How can you fix this problem?

- A. Restart Tomcat on the server.
- B. Restart Apache Web Server on the server.
- C. Delete all existing roles and then manually rebuild them.
- D. Close the browser window, then reauthenticate as AHammer.
- E. Check the Tomcat configuration file to make sure iManager has been configured correctly.
- F. Authenticate as admin to iManager and assign the missing roles to the AHammer user object.

Answer: F

Question: 8

How do you perform a Down-Server Upgrade?

- A. Use iManager 2.0 or later to complete the upgrade from a workstation.
- B. Use NetWare Deployment Manager to complete the upgrade from a workstation.
- C. Mount the OES NetWare Operating System CD; then select Novell > Install to begin the upgrade.
- D. Boot the server from the OES NetWare Operating System CD and manually execute INSTALL.BAT with the /UPGRADE switch.

Answer: D

Question: 9

On an OES NetWare server, you must restart the Tomcat service after installing a new iManager plug-in. How can you do this?

- A. At the server console, enter TC4RESTART.
- B. At the server console, enter TC4 /RESTART.
- C. At the server console, enter TOMCAT -RESTART.
- D. At the server console, enter TC4STOP; then enter TOMCAT4.
- E. At the server console, enter TOMCAT /STOP; then enter TOMCAT /START.

Answer: D

Question: 10

Which OES NetWare component enables script-based management of the network?

- A. NXBit Support

Exam Name:	Upgrading to Novell Open Enterprise Server for NetWare		
Exam Type:	Novell		
Exam Code:	50-701	Total Questions:	165

- B. Bash Shell Support
- C. ZENworks Management Daemon
- D. Common Information Model Support

Answer: B

Question: 11

How many snapshots can exist on a particular stored-on pool?

- A. 10
- B. 50
- C. 100
- D. 250
- E. 500
- F. 1000

Answer: E

Question: 12

Where are the files for the Tomcat service located on an OES NetWare server?

- A. Sys:\Tc4
- B. Sys:\Ucs
- C. Sys:\Php5
- D. Sys:\Tomcat
- E. Sys:\System
- F. Sys:\Etc\Tomcat
- G. Sys:\System\Tomcat

Answer: D

Question: 13

Which password does the CIFS service on an OES NetWare server use, by default, to authenticate clients?

- A. NIS Password
- B. LDAP Password
- C. Simple Password
- D. Universal Password
- E. eDirectory Password

Answer: C

Question: 14

What is the role of the ARKCONFIG.XML file?

- A. It contains the interval for running Versioning jobs.
- B. It contains configuration settings for the Archive Server.
- C. It contains XML code for configuring an upgrade from Archive and Versioning Services 1.0.
- D. It contains XML configuration settings for the Archive and Versioning Services MySQL instance.

Answer: B

Question: 15

Pass4SureOfficial.com Lifetime Membership Features;

- Pass4SureOfficial Lifetime Membership Package includes over **2500** Exams.
- **All** exams Questions and Answers are included in package.
- **All** Audio Guides are included **free** in package.
- **All** Study Guides are included **free** in package.
- **Lifetime** login access.
- Unlimited download, no account expiry, no hidden charges, just one time \$99 payment.
- **Free updates** for Lifetime.
- **Free Download Access** to All new exams added in future.
- Accurate answers with explanations (If applicable).
- Verified answers researched by industry experts.
- Study Material **updated** on regular basis.
- Questions, Answers and Study Guides are downloadable in **PDF** format.
- Audio Exams are downloadable in **MP3** format.
- **No authorization** code required to open exam.
- **Portable** anywhere.
- 100% success **Guarantee**.
- **Fast**, helpful support 24x7.

View list of All exams (Q&A) downloads

<http://www.pass4sureofficial.com/allexams.asp>

View list of All Study Guides (SG) downloads

<http://www.pass4sureofficial.com/study-guides.asp>

View list of All Audio Exams (AE) downloads

<http://www.pass4sureofficial.com/audio-exams.asp>

Download All Exams Samples

<http://www.pass4sureofficial.com/samples.asp>

To purchase \$99 Lifetime Full Access Membership click here

<http://www.pass4sureofficial.com/purchase.asp>

3COM	CompTIA	Filemaker	IBM	LPI	OMG	Sun
ADOBE	ComputerAssociates	Fortinet	IISFA	McAfee	Oracle	Sybase
APC	CWNP	Foundry	Intel	McData	PMI	Symantec
Apple	DELL	Fujitsu	ISACA	Microsoft	Polycom	TeraData
BEA	ECCouncil	GuidanceSoftware	ISC2	Mile2	RedHat	TIA
BICSI	EMC	HDI	ISEB	NetworkAppliance	Sair	Tibco
CheckPoint	Enterasys	Hitachi	ISM	Network-General	SASInstitute	TruSecure
Cisco	ExamExpress	HP	Juniper	Nokia	SCP	Veritas
Citrix	Exin	Huawei	Legato	Nortel	See-Beyond	Vmware
CIW	ExtremeNetworks	Hyperion	Lotus	Novell	SNIA	

